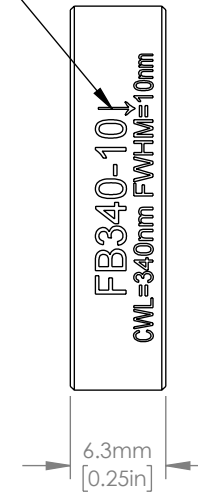


ENGRAVED ARROW INDICATES
SUGGESTED DIRECTION
OF LIGHT TRANSMISSION



NOTES/SPECIFICATIONS:

1. CENTER WAVELENGTH (CWL): 340nm \pm 2nm
2. FULL WIDTH HALF MAX(FWHM): 10nm \pm 2nm (NOMINAL)
3. TRANSMISSION MINIMUM: 25%
4. BLOCKING: 200nm-3000nm > OD4
5. SURFACE/COATING QUALITY: 80-50 SCRATCH-DIG
6. OPERATING TEMPERATURE: -50°C TO +80°C
7. OPTIMUM OPERATING TEMPERATURE: 23°C
8. EDGE TREATMENT: MOUNTED IN BLACK ANODIZED ALUMINUM RING

FOR INFORMATION ONLY
NOT FOR MANUFACTURING PURPOSES

DRAWING PROJECTION			THORLABS www.thorlabs.com Ø 25.4mm BANDPASS FILTER CWL=340nm, FWHM=10nm	
NAME	DATE			
DRAWN	CR	25/MAY/12	MATERIAL SCHOTT BOROFLOAT & SODA LIME	
APPROVAL	DD	16/AUG/12		
COPYRIGHT © 2012 BY THORLABS VALUES IN PARENTHESIS ARE CALCULATED AND MAY CONTAIN ROUND OFF ERRORS			ITEM #	APPROX WEIGHT
			FB340-10	27 g