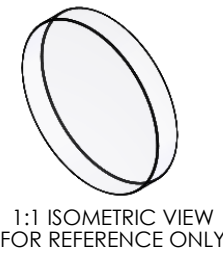
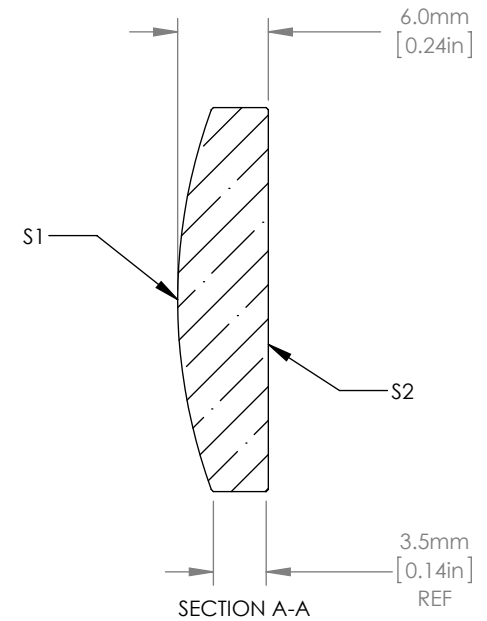
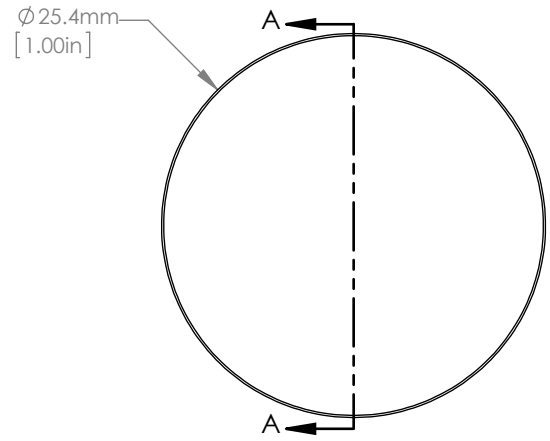


	R	k	A <sub>4</sub>
S1	35.8256	-0.6291	1.4398E-7
S2	PLANO	-	-



$$z = \frac{Y^2}{R \left( 1 + \sqrt{1 - (1 + k) Y^2 / R^2} \right)} + A_4 Y^4$$

Y(mm)	SAG (mm)
0	0
1.27	2.251341E-2
2.54	9.00896E-2
3.81	2.02837E-1
5.08	3.60936E-1
6.35	5.64643E-1
7.62	8.14288E-1
8.89	1.11028
10.16	1.45311
11.43	1.84334
12.70	2.28165



- NOTES/SPECIFICATIONS:
- DESIGN WAVELENGTH: 780nm
  - FOCAL LENGTH: EFL=79.0mm ±0.5%
  - NUMERICAL APERTURE: 0.143
  - REFRACTIVE INDEX: 1.459
  - CLEAR APERTURE: >90% of DIAMETER
  - WORKING DISTANCE (REF): 74.84mm
  - SURFACE QUALITY: 20-10 SCRATCH-DIG
  - RMS WAVEFRONT ERROR: DIFFRACTION LIMITED AT DISCRETE WAVELENGTHS FROM 250-2325nm
  - RADIUS OF CURVATURE TOLERANCE (S1): ±0.10%
  - SAG DEVIATION (POWER)(S1): ±2.0µm
  - RMS IRREGULARITY (S1): <1 FRINGE
  - PV FLATNESS (S2): <λ/10
  - CENTRATION: <3arcmin
  - COATING: VAR Rabs<0.25%, λ=780nm, AOI=0°

FOR INFORMATION ONLY  
NOT FOR MANUFACTURING PURPOSES

DRAWING PROJECTION				<b>THORLABS</b> www.thorlabs.com 1" ASPHERIC LENS, NA=0.143, DW=780, f=79.0mm, 780 nm V-COAT	
NAME	DATE	NAME	DATE		
DRAWN	NE	10/JAN/14		MATERIAL	REV
APPROVAL	WD	20/JAN/14		UV FUSED SILICA	B
COPYRIGHT © 2013 BY THORLABS VALUES IN PARENTHESIS ARE CALCULATED AND MAY CONTAIN ROUND OFF ERRORS				ITEM #	APPROX WEIGHT
				ASL10142-780	0.008 kg