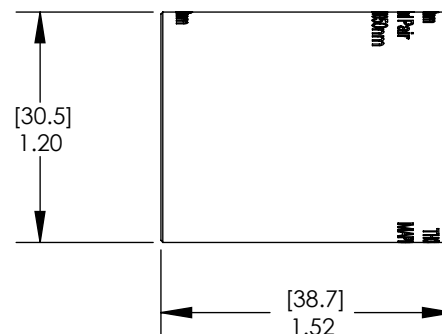
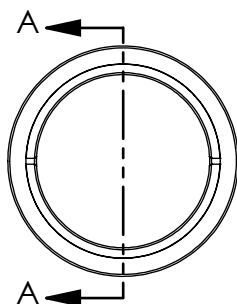
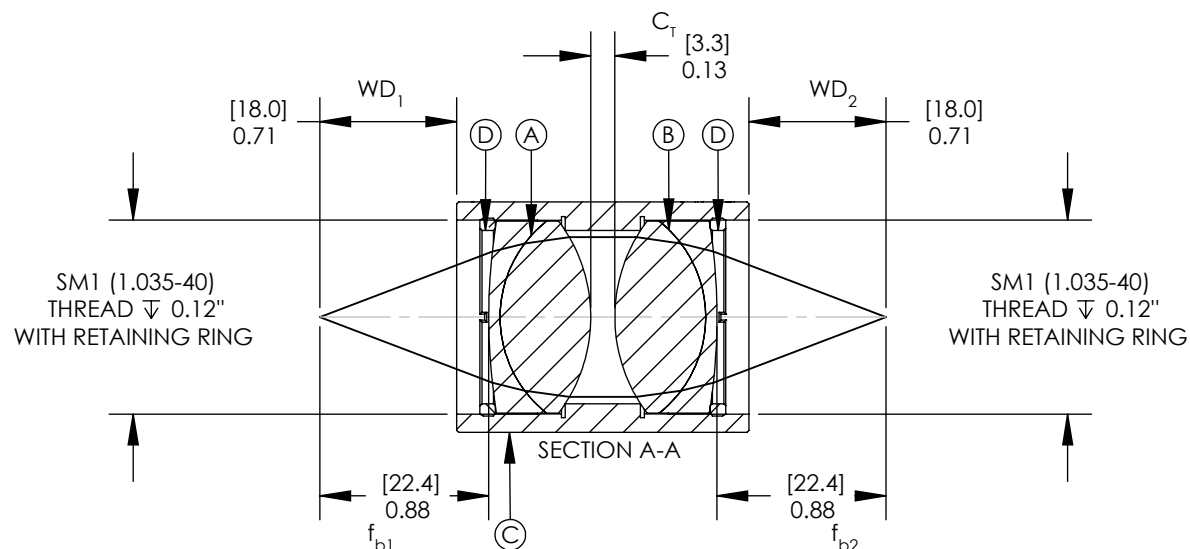


ITEM	THORLABS P/N	MATERIAL
(A), (B)	DOUBLET 1 & 2 AC254-030-B	N-BAF10 & N-SF6HT
(C)	HOUSING -	BLACK ANODIZED 6061-T6 ALUMINUM
(D)	RETAINING RING SM1RR	BLACK ANODIZED 6061-T6 ALUMINUM

ISOMETRIC VIEW



NOTES/SPECIFICATIONS:

1. FOCAL LENGTH: $f_1 = 30.0\text{mm}$ $f_2 = 30.0\text{mm}$
2. MAGNIFICATION: 1:1
3. CLEAR APERTURE: > 90% OF LENS DIAMETER ($\phi 25.4\text{mm}$)
4. DESIGN WAVELENGTHS: 706.5nm, 855nm, 1015nm
5. AR COATING: BBAR $R_{\text{avg}} < 0.5\%$ FROM 650-1050nm

DIMENSIONS ARE IN [mm]
in

THIS DRAWING IS FOR INFORMATION ONLY
NOT INTENDED FOR MANUFACTURING

	NAME	DATE
DRAWN	SFG	02/15/2010
ENG APPR.	ND	03/23/2010
MFG APPR.	DD	04/26/2010

PROPRIETARY AND CONFIDENTIAL

THE INFORMATION CONTAINED IN THIS DRAWING IS THE SOLE PROPERTY OF THORLABS, INC. ANY REPRODUCTION IN PART OR AS A WHOLE WITHOUT THE WRITTEN PERMISSION OF THORLABS, INC. IS PROHIBITED.

THORLABS INC. PO BOX 366
NEWTON NJ

TITLE: -B COATED MATCHED ACHROMATIC
PAIR $f_1 = 30.0\text{mm}$ $f_2 = 30.0\text{mm}$

MATERIAL: SEE TABLE SIZE A REV. A

SCALE: 1:1

SHEET 1 OF 1

DWG. NO.
20988-E01

PART NO.
MAP103030-B