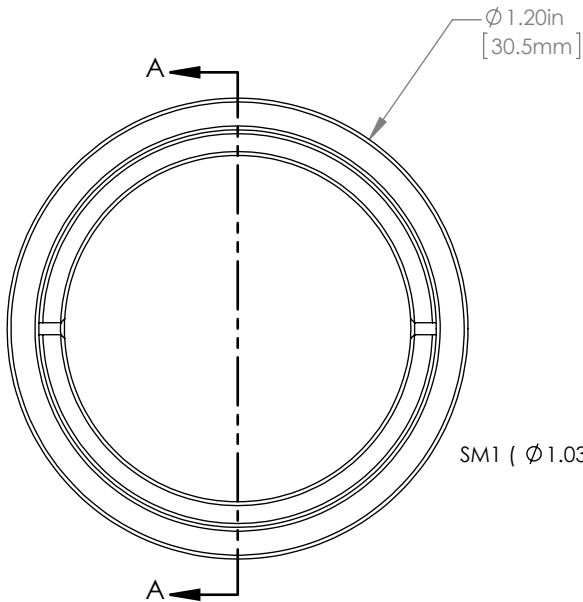
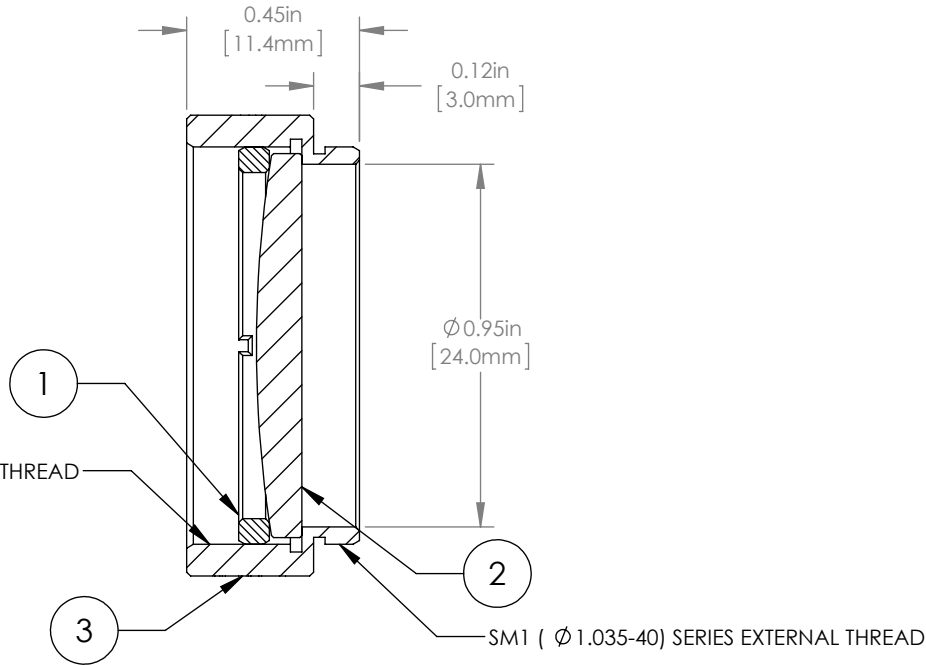


	PART DESCRIPTION	MATERIAL
①	SM1RR	ANODIZED ALUMINUM
②	LA4924-A	UV FUSED SILICA
③	ENGRAVED HOUSING	ANODIZED ALUMINUM



SM1 (\varnothing 1.035-40) SERIES INTERNAL THREAD




SM1 (\varnothing 1.035-40) SERIES EXTERNAL THREAD

NOTES/SPECIFICATIONS:

- DESIGN WAVELENGTH: 546nm
- FOCAL LENGTH: $f=175.0\text{mm} \pm 1\%$
- WORKING DISTANCE (REF): 169.1mm
- CLEAR APERTURE: $> \varnothing 22.86\text{mm}$
- SURFACE QUALITY: 40-20 SCRATCH-DIG
- COATING: BBAR $R_{\text{avg}} < 0.5\%$ FROM 350-700nm, AOI: 0°, ON OUTER OPTICAL SURFACES

FOR INFORMATION ONLY
NOT FOR MANUFACTURING PURPOSES

DRAWING PROJECTION			 www.thorlabs.com	
	NAME	DATE		
DRAWN	GG	13/OCT/15	\varnothing 1" MOUNTED PLANO-CONVEX LENS, $f=175\text{mm}$, -A COAT	
APPROVAL	DD	13/OCT/15		
COPYRIGHT © 2015 BY THORLABS			SEE TABLE	
VALUES IN PARENTHESIS ARE CALCULATED AND MAY CONTAIN ROUND OFF ERRORS			ITEM #	APPROX WEIGHT
			LA4924-A-ML	8 g