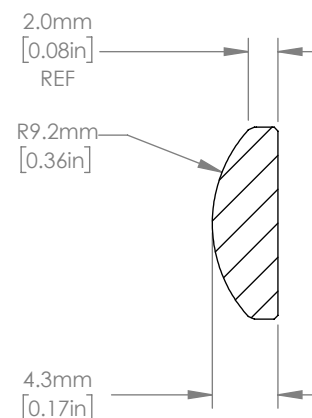
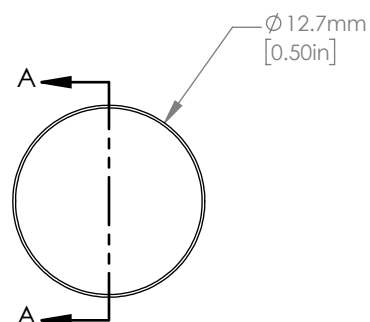




ISOMETRIC VIEW  
SCALE: 2:1


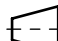


SECTION A-A

NOTES/SPECIFICATIONS:

1. DESIGN WAVELENGTH: 587.6 nm
2. FOCAL LENGTH:  $f=20.1 \text{ mm} \pm 1\%$
3. BACK FOCAL LENGTH(REF):  $bf=17.1 \text{ mm}$
4. CLEAR APERTURE:  $> \varnothing 11.43 \text{ mm}$
5. SURFACE QUALITY: 20-10 SCRATCH-DIG
6. CENTRATION:  $< 3 \text{ arcmin}$
7. DIAMETER TOLERANCE:  $+0.0/-0.1 \text{ mm}$
8. THICKNESS TOLERANCE:  $\pm 0.1 \text{ mm}$
9. COATING: VAR R $<0.25\%$  PER SURFACE FOR 532 nm, AOI: 0°

FOR INFORMATION ONLY  
NOT FOR MANUFACTURING PURPOSES

DRAWING PROJECTION							<b>THORLABS</b> www.thorlabs.com	
	NAME	DATE	Ø 12.7 mm f=20 mm FUSED SILICA PLANO CONVEX LENS, -532 nm COAT					
DRAWN	YB	28/APR/20						
APPROVAL	BW	25/MAY/20	MATERIAL					REV
COPYRIGHT © 2020 BY THORLABS			UV FUSED SILICA					A
VALUES IN PARENTHESIS ARE CALCULATED AND MAY CONTAIN ROUND OFF ERRORS			ITEM #			APPROX WEIGHT		
			LA4647-532			0.87 g		