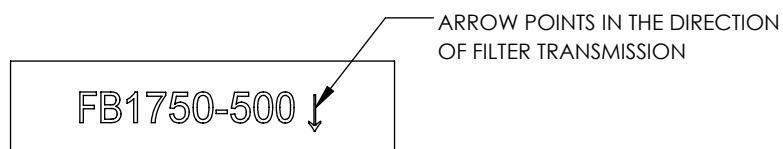
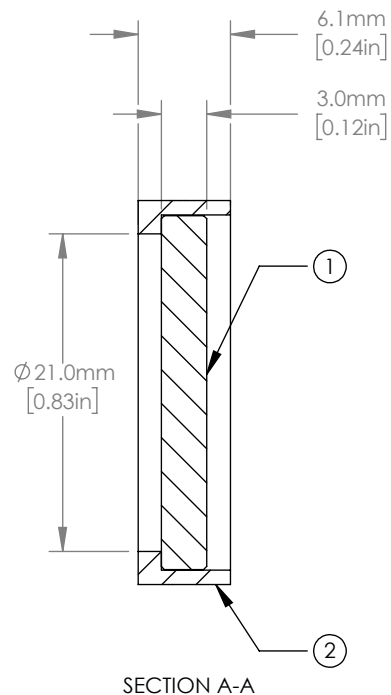
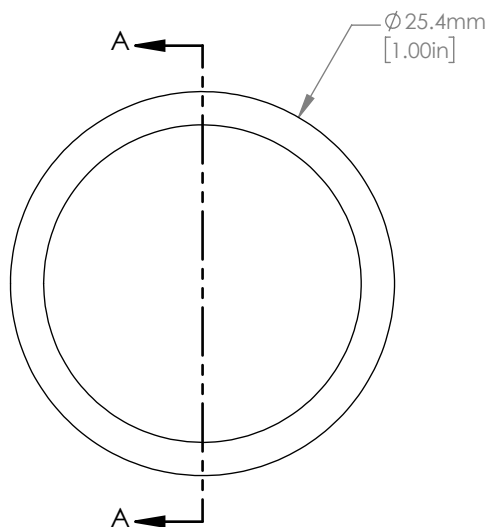


	PART DESCRIPTION	MATERIAL
①	BANDPASS FILTER	N-BK7
②	ENGRAVED HOUSING	ANODIZED ALUMINUM



NOTES/SPECIFICATIONS:

1. CENTER WAVELENGTH (CWL): 1750 nm
2. FULL WIDTH HALF MAXIMUM (FWHM): 500 nm
3. TRANSMISSION MINIMUM: 70% AT CWL
4. OUT OF BAND TRANSMISSION: <0.1% FROM 0.200  $\mu$ m to 12  $\mu$ m
5. CLEAR APERTURE:  $\varnothing$ 21.0 mm
6. SURFACE QUALITY: 80-50 SCRATCH-DIG
7. OPERATING TEMPERATURE: -50° TO 80° C
8. EDGE TREATMENT: MOUNTED IN BLACK ANODIZED ALUMINUM RING
9. EDGE MARKINGS: CENTER WAVELENGTH-FULL WIDTH HALF MAX

FOR INFORMATION ONLY  
NOT FOR MANUFACTURING PURPOSES

DRAWING PROJECTION				<b>THORLABS</b> www.thorlabs.com IR BANDPASS FILTERS, $\varnothing$ 25 mm, CWL=1750 nm, FWHM = 500 nm
	NAME	DATE		
DRAWN	JAC	27/MAY/21		MATERIAL
APPROVAL	DD	27/MAY/21		
COPYRIGHT © 2021 BY THORLABS				SEE TABLE
VALUES IN PARENTHESIS ARE CALCULATED AND MAY CONTAIN ROUND OFF ERRORS				ITEM #
				APPROX WEIGHT
				FB1750-500
				5 g