

High-speed, high-resolution whole slide scanner with network features


# NanoZoomer series



**HAMAMATSU**

PHOTON IS OUR BUSINESS





*Quickly converts  
glass slides into high-definition  
digital data by high-speed scanning!*

**Views the entire image of a sample and magnifies images to any size or detail just the same as microscope observation.**

The NanoZoomer Series is a family of whole slide scanners that convert glass slides into high-resolution digital data by high-speed scanning. The NanoZoomer comes with a variety of functions such as image acquisition of fluorescence samples and multilayer acquisition. Scanned data can be viewed on a PC monitor by using the dedicated viewer software, and patented navigation map technique\* delivers slide viewing environment just as if operating a microscope.

\*US Patent RE42,220E



#### Whole slide imaging have many advantages!

##### Copying and Sharing

Digitized slides can be copied and shared. This feature of whole slide imaging can be used in a variety of applications. For example, a large group of people can observe and discuss a single sample.

##### Slide Storage

Digital data does not deteriorate, and it is more secure from damages and losses than glass slides. You can view digital data in its original quality anytime and anywhere.

##### Databases

Large numbers of whole slide imaging can be stored into a database and incorporated into a laboratory information system. You can share data and construct slide libraries with distant facilities and research institutes.

##### Networks

Using the Internet or a local area network, you can observe and evaluate slides from a distant location.

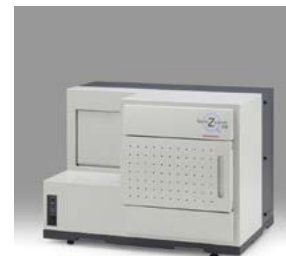
High-end model

# NanoZoomer-XR

Fluorescence imaging

**Comes with rapid automatic processing of up to 320 slides, dynamic focus, and image quality judgment functions**

- Scanning speed 20× mode (15 mm × 15 mm) : Approx. 35 s  
40× mode (15 mm × 15 mm) : Approx. 45 s
- Max. 320 slides



Standard model

# NanoZoomer S210

**Automatic processing of up to 210 slides and a solid history of stable performance**

- Scanning speed 20× mode (15 mm × 15 mm) : Approx. 60 s  
40× mode (15 mm × 15 mm) : Approx. 150 s
- Max. 210 slides



Research-use model

# NanoZoomer S60

Fluorescence imaging

**Automatic processing of up to 60 standard size slides and 30 double size slides**

- Scanning speed 20× mode (15 mm × 15 mm) : Approx. 60 s  
40× mode (15 mm × 15 mm) : Approx. 150 s
- Max. 60 slides



Compact model

# NanoZoomer-SQ

**Easy to use and affordable model**

- Scanning speed 20× mode (15 mm × 15 mm) : Approx. 150 s  
40× mode (15 mm × 15 mm) : Approx. 275 s
- Max. 1 slide



## Specifications

Product name		NanoZoomer-XR	NanoZoomer S210	NanoZoomer S60	NanoZoomer-SQ
Part number		C12000-01	C13239	C13210	C13140
Scanning speed	20× mode (15 mm × 15 mm)	Approx. 35 s	Approx. 60 s	Approx. 60 s	Approx. 150 s
	40× mode (15 mm × 15 mm)	Approx. 45 s	Approx. 150 s	Approx. 150 s	Approx. 275 s
Objective lens		20× (NA 0.75) User can select 20× or 40× mode at start of scanning			
Compatible glass slide		26 mm × 76 mm Thickness 0.9 mm to 1.2 mm	26 mm × 76 mm Thickness 0.9 mm to 1.2 mm	26 mm × 76 mm 52 mm × 76 mm (Option) Thickness 0.9 mm to 1.2 mm	26 mm × 76 mm Thickness 0.9 mm to 1.2 mm
Slide loader	Standard size slide	320 slides (40 slides × 8 cassettes)	210 slides (30 slides × 7 cassettes)	60 slides (20 slides × 3 cassettes)	1 slide
	Double size slide	-	-	30 slides (10 slides × 3 cassettes: option)	-
Scanning resolution	20× mode	0.46 μm/pixel			
	40× mode	0.23 μm/pixel			
Focusing method		Pre-Focus map Dynamic Pre-focus	Pre-Focus map	Pre-Focus map	Pre-Focus map
Z-stack feature		Acquires Z-stack images over entire scan area			
Fluorescence imaging module		Option	No	Option	No
Barcode reader		1D barcode (standard feature), 2D barcode (option)			
Image compression		JPEG compression, Uncompressed data (8 bit)			
Slide format		JPEG compressed image + slide information			
Power supply		AC 100 V to AC 240 V			
Power consumption (Scanner only)		Approx. 300 VA	Approx. 160 VA	Approx. 225 VA	Approx. 72 VA

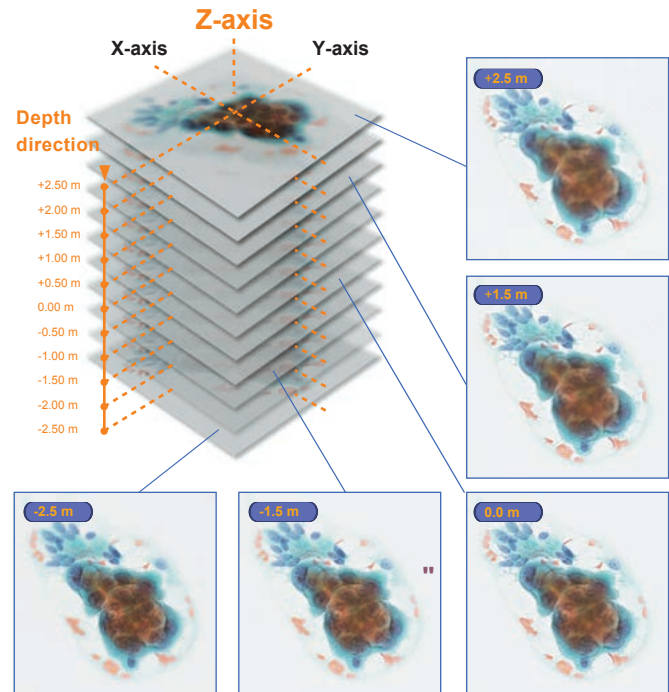
# NanoZoomer series scanning features

The scan units in the NanoZoomer Series employ " Z-stack function" to acquire the high resolution digitized images of thick samples.

## Z-stack feature for thick samples

There are samples which have 3D structures such as clumps of cells and thick tissues. They require focus adjustment during observation. To handle these kinds of slides, the NanoZoomer series is equipped with the Z-stack feature that allows you to focus on different depths in the sample.

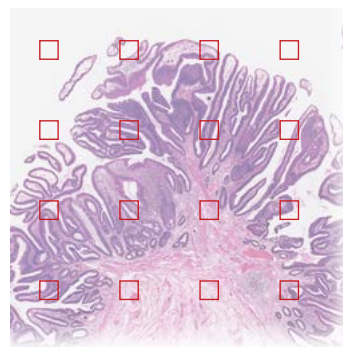
The NDP.view2 viewer software lets you adjust the focus on a Z-stack slide much like you would adjust the focus of a microscope. You can also point to an area of interest and let NDP.view2 apply autofocus for maximum clarity.



Optimized scanning condition provided by the superior and unique automated features.

## Automatic focus scoring

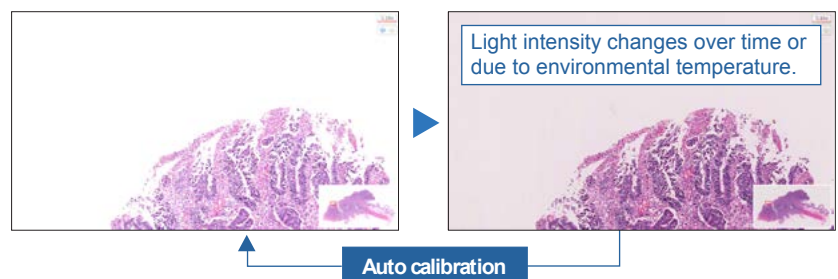
Slide quality check is often conducted manually after scanning to avoid scanning failure caused by dirt on a slide or sample folding. The NanoZoomer series evaluate scanned whole slide imaging automatically and generate the focus score of each slide's quality for your review. Focus check points within a scanned slide are automatically determined, at each check point. Then a focus score is generated and displayed on a monitor screen.



Automatic focus scoring is conducted at each of those points in red squares selected from all over the sample.

## Automatic system calibration

To maintain optimized condition of the scanner, routine calibrations of light intensity, white balance and shading are required. The NanoZoomer series automatically and periodically conducts a system calibration using a calibration slide located in a slide cassette, and keeps the system optimized. Whenever you scan, you will get the best whole slide imaging it can deliver.



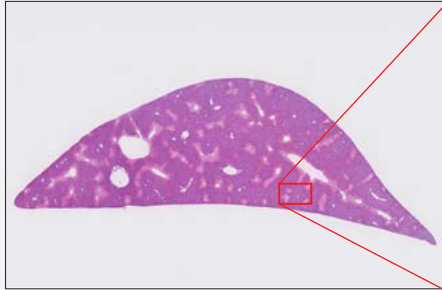
Auto calibration assures slides get scanned under optimized conditions.



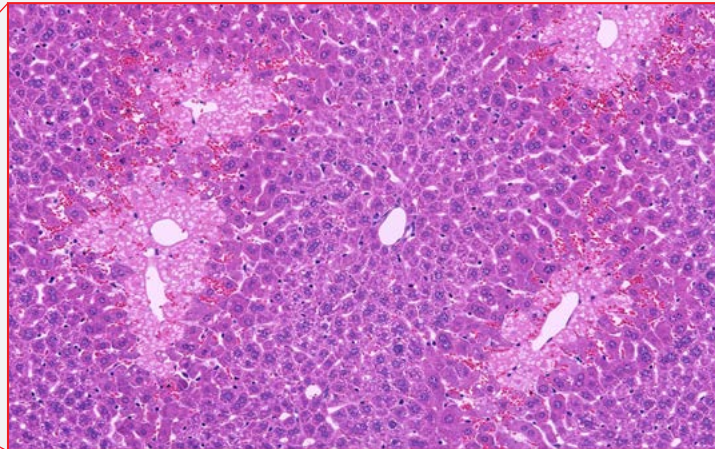
# Examples

## Toxicity test using H&E staining

NanoZoomer is available for a wide range of applications including toxicity evaluation.



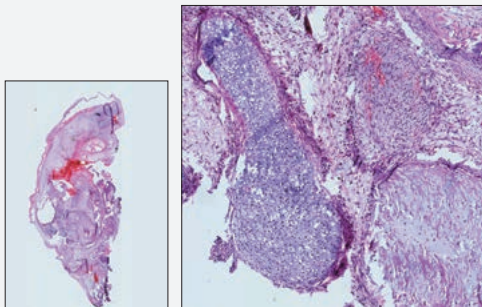
Liver in mouse with a dose of acetaminophen in 4 hours (Whole Image)



Liver in mouse with a dose of acetaminophen in 4 hours (Magnified Image)  
Provision of Glass Slide  
Courtesy of Dr.June Kanno, Division of Toxicology, Biological Safety Research Center,  
National Institute of Health Sciences, Japan

## Application for iPS cells research

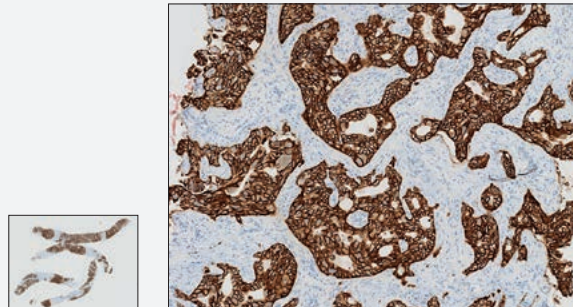
NanoZoomer is great for testing iPS cell differentiation ability by observation of teratoma tissue samples ranging from overall views to high-magnification images.



Teratoma formation by using mouse iPS cells (HE-stain).  
Courtesy of Center for iPS Research and Application, Kyoto University, Japan

## Protein localization analysis using immunostaining

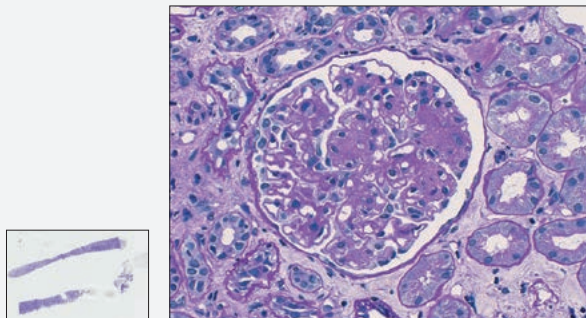
NanoZoomer is ideal for observing localization of various types of proteins by using immunostaining techniques and so opens a host of diverse new applications.



Specimen of needle biopsy stained by IHC(HER2)  
Courtesy of Dr.Kurozumi M, the Department of Pathology, Saitama Cancer Center, Japan

## Conferences by whole slide imaging

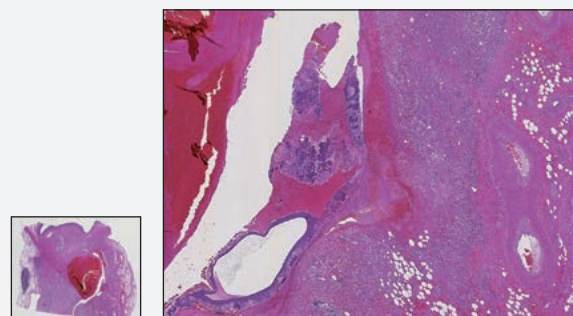
With whole slide imaging, you can share the same sample among many people without worrying about sample deterioration.



PAS stained kidney biopsy sample  
Courtesy of Hiroshi Uozaki, M.D., Ph.D., Department of Pathology,  
The University of Tokyo Hospital, Japan

## Observing H&E stained samples

This is the basic staining method for tissue samples and is widely used for pathological examinations and tissue anatomy.



Pancreatic AVM with anisakiasis, resulting in pancreatic bleeding  
Courtesy of Yukihiro Imai, MD Ph.D., Department of Pathology, KobeCity Medical Center General Hospital, Japan

# Fluorescence imaging modules L12225 / L13820

**Digitization of fluorescence samples enables long-term observation with no worries about fading, discoloration, or photobleaching.**

The Fluorescence Imaging Modules combined with the NanoZoomer Series are able to scan the entire image of fluorescence-stained samples at high speed and high resolution. The scanned images are saved as digital data which allows long-term observation without photobleaching which has been a difficult problem on conventional fluorescence microscopes.



NanoZoomer-XR + L12225-01/-02

## Features

**Adding a Fluorescence Imaging Module captures a diverse range of fluorescence images**

### Scans samples stained with multiple fluorescence probes

The Fluorescence Imaging Modules scan and generate digital data for samples stained with multiple fluorescence probes such as Q-dots, fluorochromes, fluorescence proteins, and others. The filter wheel unit automatically selects and switches 6 filters for excitation and fluorescence wavelengths to allow sequential image acquisition at single or multiple wavelengths.

### Superimposes images of entire tissues

The Fluorescence Imaging Modules can superimpose a bright field image and a fluorescence image or superimpose two or more fluorescence images at tissue levels. This allows observing target protein localization and expression levels across the entire image.

### Uses high-power and long-life light source that needs no optical axis alignment XR

The Fluorescence Imaging Modules use the L11600-05 light source optimized for fluorescence microscopes. It offers an extremely long service life of 2000 hours as well as high power and high stability. No optical axis alignment is required even when the lamp is replaced.

### Uses dark field illumination for sample identification

Fluorescence sample locations on a slide are usually difficult to find using transmitted illumination, so the Fluorescence Imaging Modules use dark field illumination\* to pinpoint sample locations. This makes it easy to detect samples of interest.

\*Patent registered

### Uses the scientific CMOS sensor (L13820) S60

NanoZoomer S60 uses the scientific CMOS sensor to acquire the detailed fluorescence images, which improved the sensitivity and scanning time compared to the conventional models.



NanoZoomer S60 + L13820-01/-02/-03

## Fluorescence module specifications

Product number	L12225-01	L12225-02
Applicable model	NanoZoomer-XR	
Light source	FL-illumination lamp unit L11600-05 *1	
Number of filter cubes installed *2	3	
Filter wheel	-	6ExΦ25/6EmΦ25

\*1 See the table below for L11600-05 specifications.

\*2 Filter cubes and filters are sold separately. Please consult us.

### FL-illumination lamp unit L11600-05 specification

Dimensional outline	180 mm(W) × 299 mm(D) × 227 mm(H)
Weight	Approx. 6.8 kg
Power consumption	300 VA

Product number	L13820-01
Applicable model	NanoZoomer S60
Light source	FL-illumination lamp unit for S60 L13820-03 *1
Number of filter cubes installed *2	3
Filter wheel	L13820-02: 6ExΦ25/6EmΦ32

\*1 See the table below for L13820-03 specifications.

\*2 Filter cubes and filters are sold separately. Please consult us.

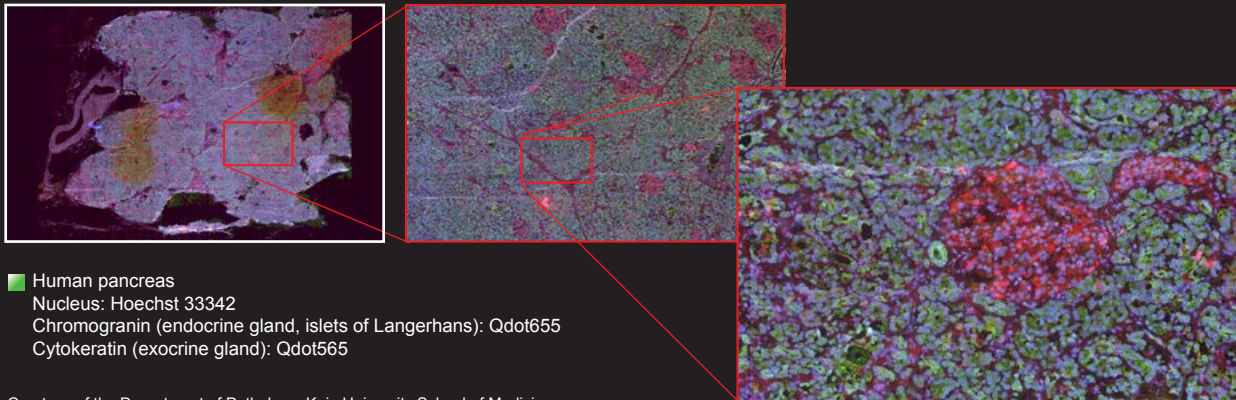
### FL-illumination lamp unit for S60 L13820-03 specification

Dimensional outline	180 mm(W) × 299 mm(D) × 227 mm(H)
Weight	Approx. 6.8 kg
Power consumption	300 VA



# Examples

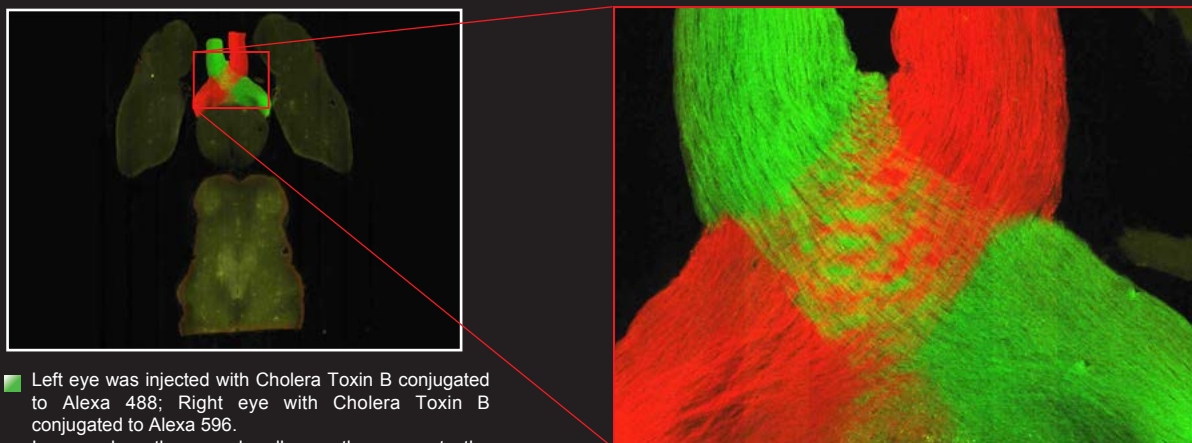
## Rapid and High-Fidelity Imaging of Fluorescence-Labeled Q-dots



- Human pancreas
- Nucleus: Hoechst 33342
- Chromogranin (endocrine gland, islets of Langerhans): Qdot655
- Cytokeratin (exocrine gland): Qdot565

Courtesy of the Department of Pathology, Keio University School of Medicine

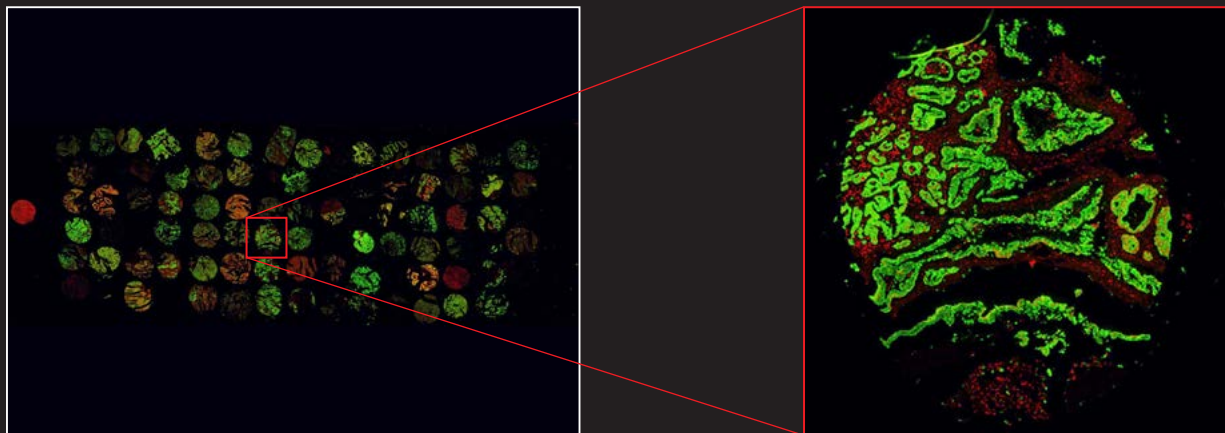
## Horizontal Section of the Nile Rat Brain Showing the Crossing of Retinal Axons in the Optic Chiasm



- Left eye was injected with Cholera Toxin B conjugated to Alexa 488; Right eye with Cholera Toxin B conjugated to Alexa 596.
- Images show the axon bundles as they cross to the opposite sides of the brain.

Courtesy of the Harvey Karten, University of California-San Diego, USA; Yves Sauve, University of Alberta, Canada; Frederic Gaillard, Universite de Poitiers, Poitiers, France

## Observing multi-wavelength fluorescence image of TMA



- TMA images

Courtesy of the Department of Chemotherapy and Department of Pathology, National Cancer Center Research Institute

## Dimensional outlines

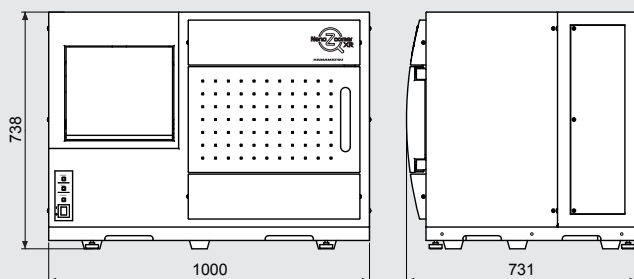
(Unit: mm)

### ■ NanoZoomer-XR C12000-01

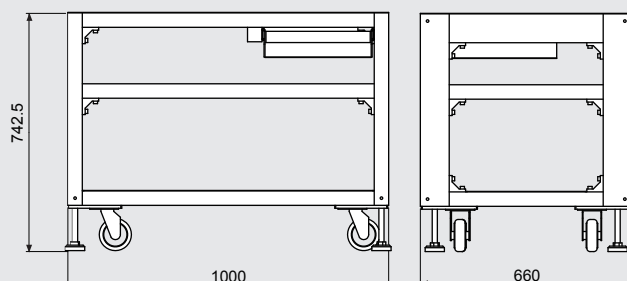
Weight

Main unit: Approx.152 kg (not including the optional fluorescence module)

Dedicated rack: Approx. 64 kg



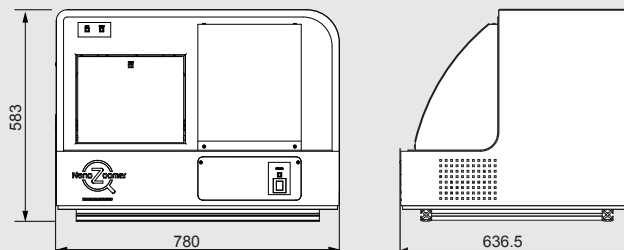
(Dedicated rack supplied as standard equipment)



### ■ NanoZoomer S210 C13239

Weight

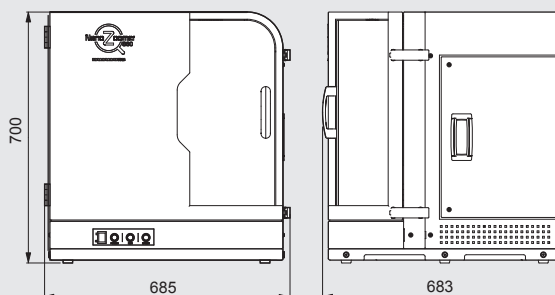
Main unit: Approx.69 kg



### ■ NanoZoomer S60 C13210

Weight

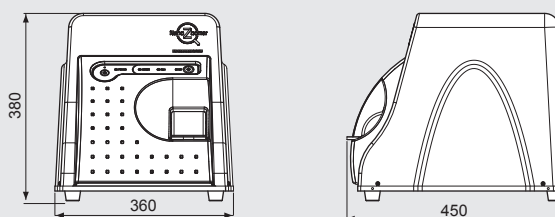
Main unit: Approx.79.1 kg (not including the optional fluorescence module)



### ■ NanoZoomer-SQ C13140

Weight

Main unit: Approx.20 kg



\* In EU, five types of NanoZoomer (NanoZoomer-XR, NanoZoomer-SQ, NanoZoomer S210, NanoZoomer S60, NanoZoomer S360), NDP.view2 (U12388-21), NDP.view2 Plus (U12388-22) and NDP.serve3 software are CE marked under EU's In Vitro Diagnostics Directive (IVDD) for in vitro diagnostic use.

In China, three types of NanoZoomer (NanoZoomer 2.0-HT, NanoZoomer2.0-RS, NanoZoomer-XR) are registered for in vitro diagnostic use.

In the US, Japan and other countries, NanoZoomer is for research use only and is not permitted to use for clinical diagnostic purposes.

★ NanoZoomer or NDP is a registered trademark of Hamamatsu Photonics K.K. (EU, Japan, U.S.A)

★ Product and software package names noted in this documentation are trademarks or registered trademarks of their respective manufacturers.

★ Subject to local technical requirements and regulations. Availability of products included in this promotional material may vary. Please consult with your local sales representative.

• Information furnished by HAMAMATSU is believed to be reliable. However, no responsibility is assumed for possible inaccuracies or omissions.

• Specifications and external appearance are subject to change without notice.

© 2018 Hamamatsu Photonics K.K.

## HAMAMATSU PHOTONICS K.K. [www.hamamatsu.com](http://www.hamamatsu.com)

HAMAMATSU PHOTONICS K.K., Systems Division

812 Joko-cho, Higashi-ku, Hamamatsu City, 431-3196, Japan, Telephone: (81)53-431-0124, Fax: (81)53-433-8031, E-mail: [export@sys.hpk.co.jp](mailto:export@sys.hpk.co.jp)

U.S.A.: Hamamatsu Corporation, 360 Foothill Road, Bridgewater, NJ 08807, U.S.A., Telephone: (1)908-231-0960, Fax: (1)908-231-1218 E-mail: [usa@hamamatsu.com](mailto:usa@hamamatsu.com)

Germany: Hamamatsu Photonics Deutschland GmbH, Arzbergerstr. 10, D-82211 Herrsching am Ammersee, Germany, Telephone: (49)8152-375-0, Fax: (49)8152-265-8 E-mail: [info@hamamatsu.de](mailto:info@hamamatsu.de)

France: Hamamatsu Photonics France S.A.R.L., 19, Rue du Saule Trapu, Parc du Moulin de Massy, 91882 Massy Cedex, France, Telephone: (33)1 69 53 71 00, Fax: (33)1 69 53 71 10 E-mail: [infos@hamamatsu.fr](mailto:infos@hamamatsu.fr)

United Kingdom: Hamamatsu Photonics UK Limited, 2 Howard Court, 10 Tewin Road, Welwyn Garden City, Hertfordshire AL7 1BW, UK, Telephone: (44)1707-294888, Fax: (44)1707-325777 E-mail: [info@hamamatsu.co.uk](mailto:info@hamamatsu.co.uk)

North Europe: Hamamatsu Photonics Norden AB, Torshamnsgatan 35 16440 Kista, Sweden, Telephone: (46)8-509 031 00, Fax: (46)8-509 031 01 E-mail: [info@hamamatsu.se](mailto:info@hamamatsu.se)

Italy: Hamamatsu Photonics Italia S.r.l., Strada della Moia, 1 int. 6, 20020 Arese (Milano), Italy, Telephone: (39)02-93 58 17 33, Fax: (39)02-93 58 17 41 E-mail: [info@hamamatsu.it](mailto:info@hamamatsu.it)

China: Hamamatsu Photonics (China) Co., Ltd., 1201 Tower B, Jiaming Center, 27 Dongsanhuan Beilu, Chaoyang District, 100020 Beijing, China, Telephone: (86)10-6586-6006, Fax: (86)10-6586-2866 E-mail: [hpc@hamamatsu.com.cn](mailto:hpc@hamamatsu.com.cn)

Taiwan: Hamamatsu Photonics Taiwan Co., Ltd., 8F-3, No.158, Section2, Gongdao 5th Road, East District, Hsinchu, 300, Taiwan R.O.C. Telephone: (886)03-659-0080, Fax: (886)03-659-0081 E-mail: [info@hamamatsu.com.tw](mailto:info@hamamatsu.com.tw)

Cat.No.SBIS0043E06  
APR/2018 HPK  
Created in Japan